

MONTHLY MEMBERSHIP PROGRESS REPORT

LOCATION LITHUANIA

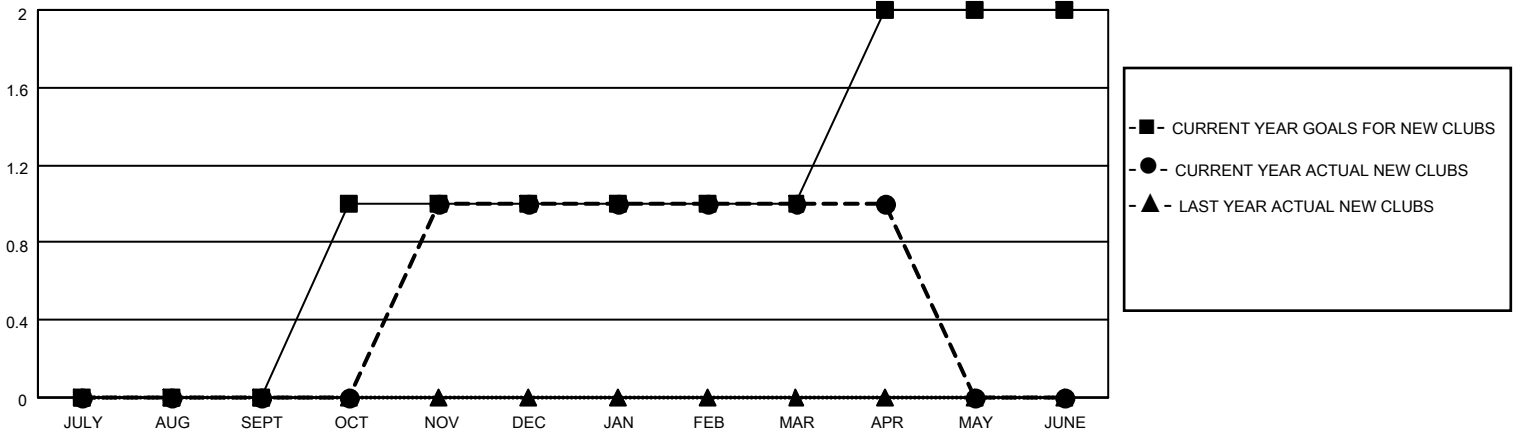
District 131

Results as of: 4/30/2021

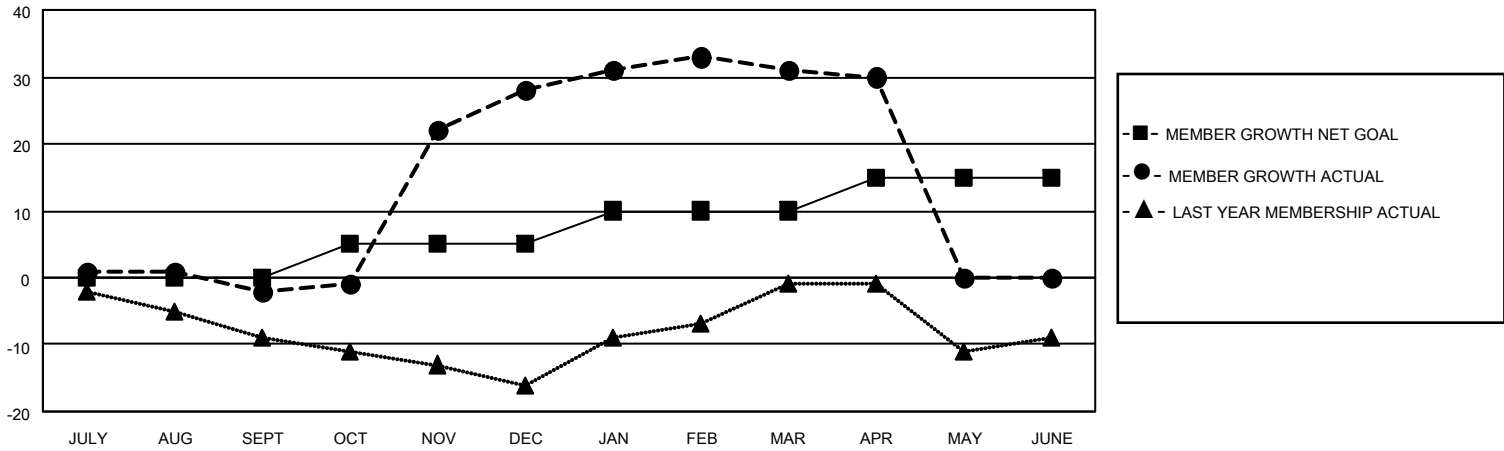
| Clubs | | | |
|-----------------------|---------------|-----------|---------------|
| RESULTS FOR 2020-2021 | | | |
| QUARTER | NEW CLUB GOAL | NEW CLUBS | DROPPED CLUBS |
| JULY/AUG/SEPT | 0 | 0 | 0 |
| OCT/NOV/DEC | 1 | 1 | 0 |
| JAN/FEB/MAR | 0 | 0 | 0 |
| APR/MAY/JUNE | 1 | 0 | 0 |

| Members | | | |
|-----------------------|------------------------|----------------------|--|
| RESULTS FOR 2020-2021 | | | |
| QUARTER | MEMBER GROWTH NET GOAL | MEMBER GROWTH ACTUAL | DROPPED MEMBERS ACTUAL (including transfers) |
| JULY/AUG/SEPT | 0 | 5 | 7 |
| OCT/NOV/DEC | 5 | 39 | 9 |
| JAN/FEB/MAR | 5 | 8 | 4 |
| APR/MAY/JUNE | 5 | 2 | 3 |

GOALS AND ACTUAL NEW CLUBS CUMULATIVE



GOALS AND ACTUAL MEMBERS CUMULATIVE



| | | |
|------------------------------------|---|--|
| DROPPED CLUBS: 0 | 18 CLUBS OF 35 ADDED 1 OR MORE NEW MEMBERS | <u>GENDER DISTRIBUTION</u> |
| <u>DROPPED MEMBERS</u> | | MALE 372 (53.45%) |
| DECEASED 0 | | FEMALE 324 (46.55%) |
| CLUB CANCELLED 0 | CLICK HERE FOR CUMULATIVE MEMBERSHIP DATA | TOTAL FAMILY UNIT MEMBERS 6 |
| OTHER 23 | | FAMILY MEMBERS PAYING HALF DUES 3 |
| TOTAL 23 | | |